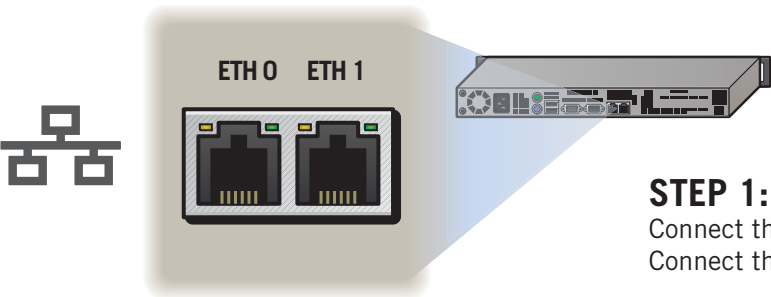
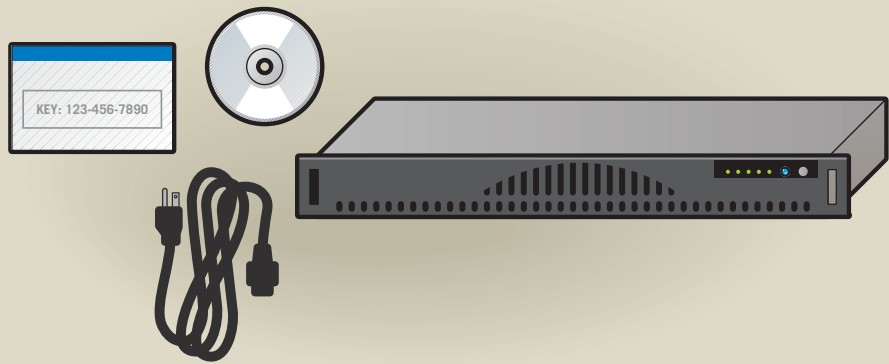


# CyBlock® Appliance | Setup Guide

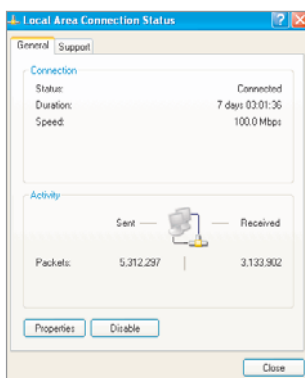
## Contents of the Box

1. CyBlock Appliance
2. Power cord
3. CD that includes:
  - CyBlock Appliance Client Software
  - Cyfin Reporter Software
  - Product Manual
  - Serial Number and License Key
4. License Key



## STEP 1: Connect the CyBlock Appliance

Connect the appliance to your LAN (local area network) as if it were another PC. Connect the Red LAN port (ETH 0) on the appliance to a network Hub using an Ethernet cable.



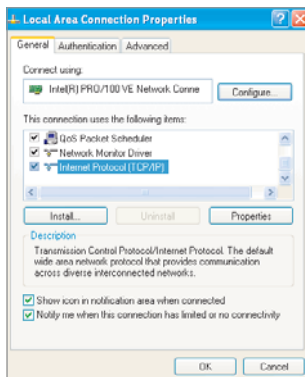
Screen 1 Local Area Connection Status

## STEP 2: Connect Your PC to the Appliance

This step is similar to configuring a single PC to your network. You will need to configure:

- IP address
- DNS
- Default Gateway

**Configure your PC** Record your current IP address information BEFORE making the changes below, as you will want to change them back after you have successfully configured the appliance.

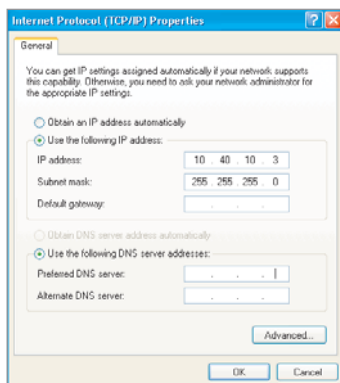


Screen 2 Local Area Connection Properties

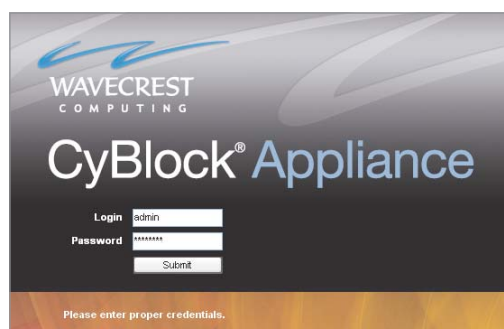
- From the Start menu on your computer, open the Control Panel and go to Network Connections.
- In Network Connections, open up the **Local Area Connection**.
- The **Local Area Connection Status** screen (*Screen 1*) will appear. Click the PROPERTIES button.
- Select INTERNET PROTOCOL (TCP/IP) (*Screen 2*), and then click the PROPERTIES button.
- Select USE THE FOLLOWING IP ADDRESS (*Screen 3*).
- In the IP address field, enter the following IP address: 10.40.10.2
- Enter the Subnet mask of 255.255.255.0.
- Click OK, and then restart your computer.

**Connect to the Appliance browser interface** When your PC comes back up, open a browser. In the address bar, type in: “http:// 10.40.10.3” and hit ENTER. You can now access the appliance through this interface (*below*). Enter the following information to login:

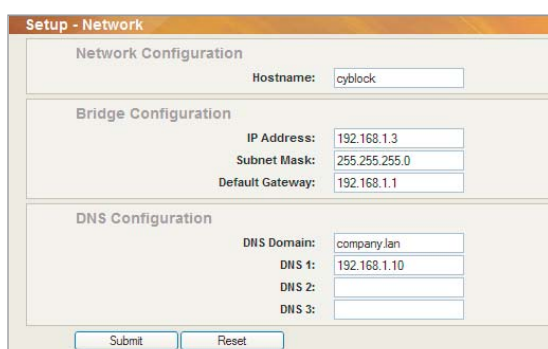
**Login:** admin    **Password:** password



Screen 3 Internet Protocol Properties



CyBlock Login Screen



Setup - Network Screen

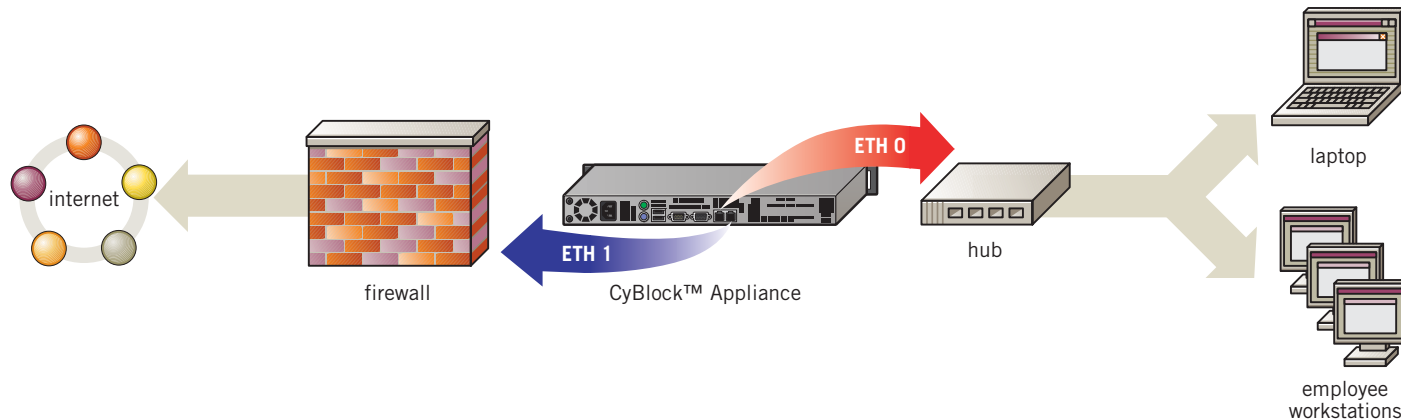
## STEP 3: Configure the Appliance

Now that you have logged in to the CyBlock Appliance browser interface, go to the **Setup – Network** screen (*Left*).

- Type in a “friendly” name for the appliance in the “Hostname” field.
- Next, enter an IP Address that fits into your network IP scheme for the CyBlock Appliance.
- Enter the subnet mask.
- Enter the Default Gateway IP address of your network.
- Enter the DNS Domain name (including suffix) in the DNS Domain field.
- Enter the IP address of your primary DNS Server in the DNS 1 field.
- If you have a secondary DNS Server, enter that IP in the “DNS 2” field, and so forth.
- Click Submit to apply the configuration.

#### STEP 4: Configure Your PC Back to Its Original IP scheme.

Using the IP information you recorded before making the changes to connect to the appliance, change your PC back to its original IP scheme using the instructions displayed in **STEP 2**.



#### STEP 5: Put the Appliance into Production.

The appliance works as an in-line device between your network and the Internet. It acts like a bridge, allowing Internet traffic to flow transparently through it. You want to place the CyBlock Appliance in front of all computers that you want to filter and behind your firewall/cable modem. Using an Ethernet cable, plug your filtered internal network traffic (LAN) into Red ETH 0 Port. Next, plug your unfiltered traffic (WAN) into Blue ETH 1 port. For more network configuration information, please go to <http://www.wavecrest.net/products/cyblock/ap/specs.html> on the Wavecrest Computing Web site.

#### What's Next?

The CyBlock Appliance client software needs to be installed. This can be done centrally, and these instructions are located in the product manual. You can access the product manual either from the included CD or from the CyBlock Appliance interface by going to **Help — Documentation**.

Support forums are at [forum.wavecrest.net](http://forum.wavecrest.net)



Wavecrest Computing  
2006 Vernon Place  
Melbourne, FL 32901 USA

Toll-free: 877-442-9346 (U.S. & Canada)  
Direct: 321-953-5351  
International: 001-321-953-5351 (outside U.S. & Canada)